



**CERTIFIED SIM RACING**

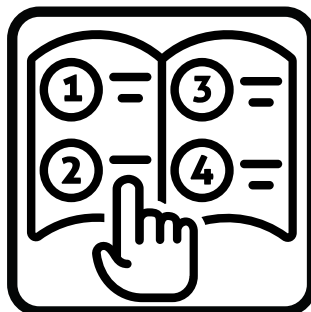


# DD-X WHEEL STAND Assembly Guide

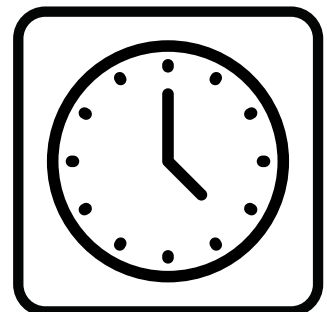
Recommended  
**1 Person**



Read Instructions  
**10 Minutes**



Assembly Time  
**30 Minutes**



# TABLE OF CONTENT

PAGE 1

NOTICES

PAGE 2

WHAT'S IN THE BOX

PAGE 3 - 6

ASSEMBLY INSTRUCTIONS



**Need Help?** We're here for you! [Contact our support team:](#)



# WARNING



Children should not use unsupervised



Do not exceed load capacity of **200KG**



Do not stand on the Wheel Stand



Take care when assembling



Do not push or pull Wheel Stand

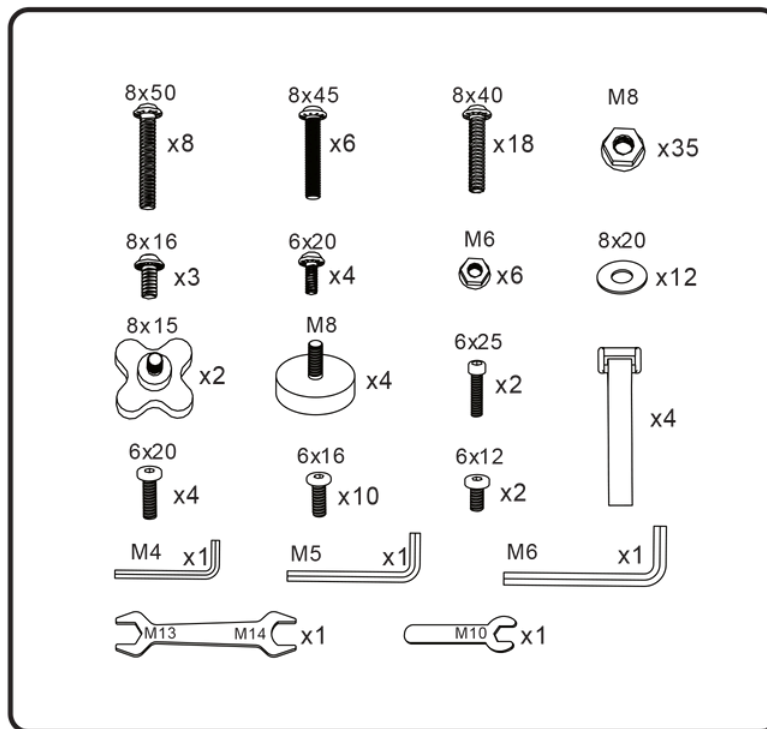
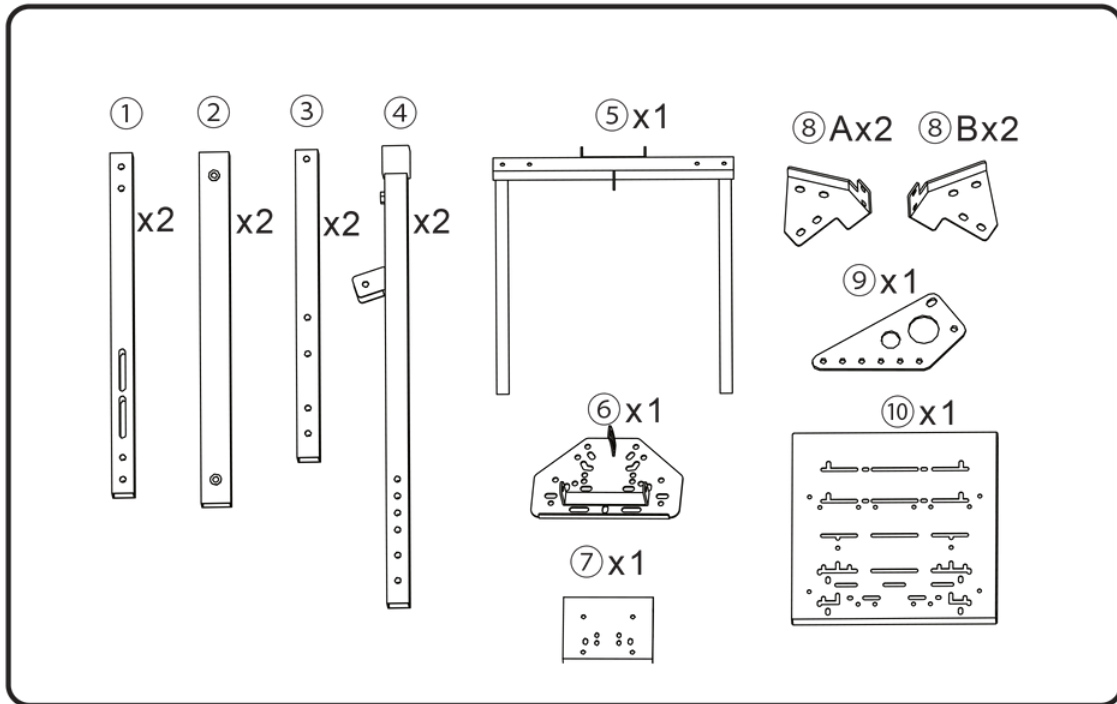


FAILURE TO COMPLY WITH OR OBSERVE ALL ASSEMBLY, SAFETY, AND OPERATION INSTRUCTIONS REGARDING THE USE OF THIS PRODUCT MAY RESULT IN **PROPERTY DAMAGE** OR **BODILY INJURY**.

- This document contains important safety regulations. Any non-conforming use may result in personal injury or mechanical damage.
- Please read this user manual carefully before use as it provides key information about safety, use, and assembly of the **DD-X Wheel Stand**
- Ensure that you have received all parts according to the part checklist prior to installation. If any parts are missing or faulty, contact the GT Omega support team for replacements.
- **Do not** over tighten the screws during installation.
- This product contains small items that could be a choking hazard if swallowed. Keep these items away from children.
- This product is designed for indoor use only. Using the product outdoors could lead to product failure and personal injury.
- Alteration or modification of any factory components outlined in the checklist will automatically void your warranty.
- Place the **DD-X Wheel Stand** away from corrosive gas, water and dusty environments.

The **DD-X Wheel Stand** is designed for indoor use and dry work areas only. Under no circumstances does the manufacturer accept warranty claims or liability claims for damages caused from improper use or handling.

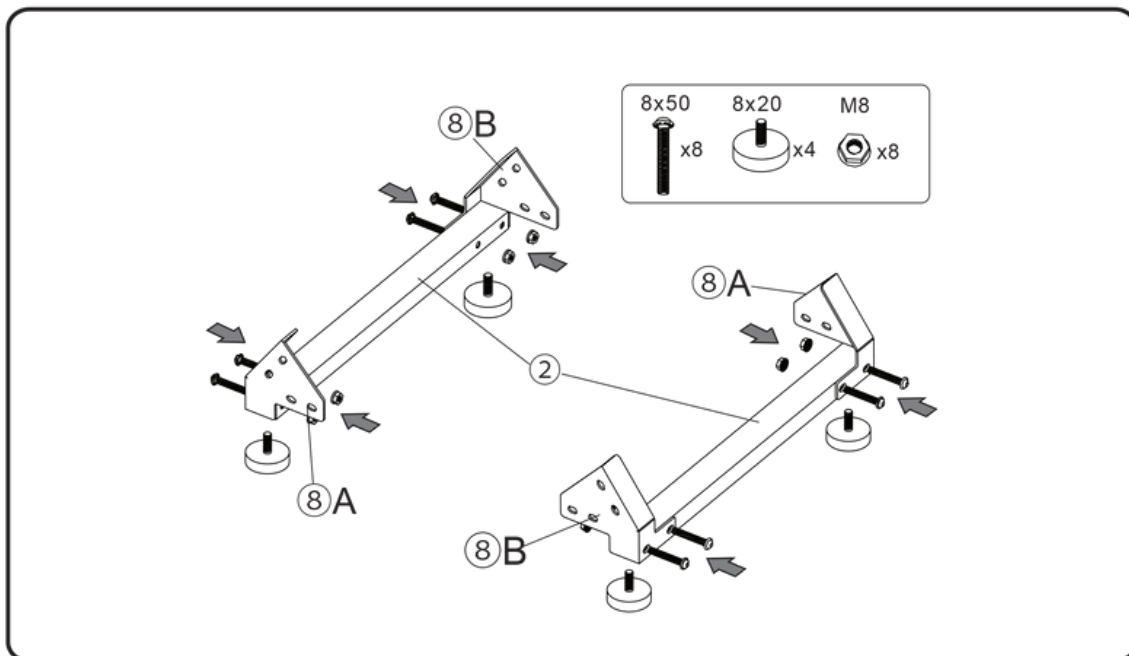
# WHAT'S IN THE BOX



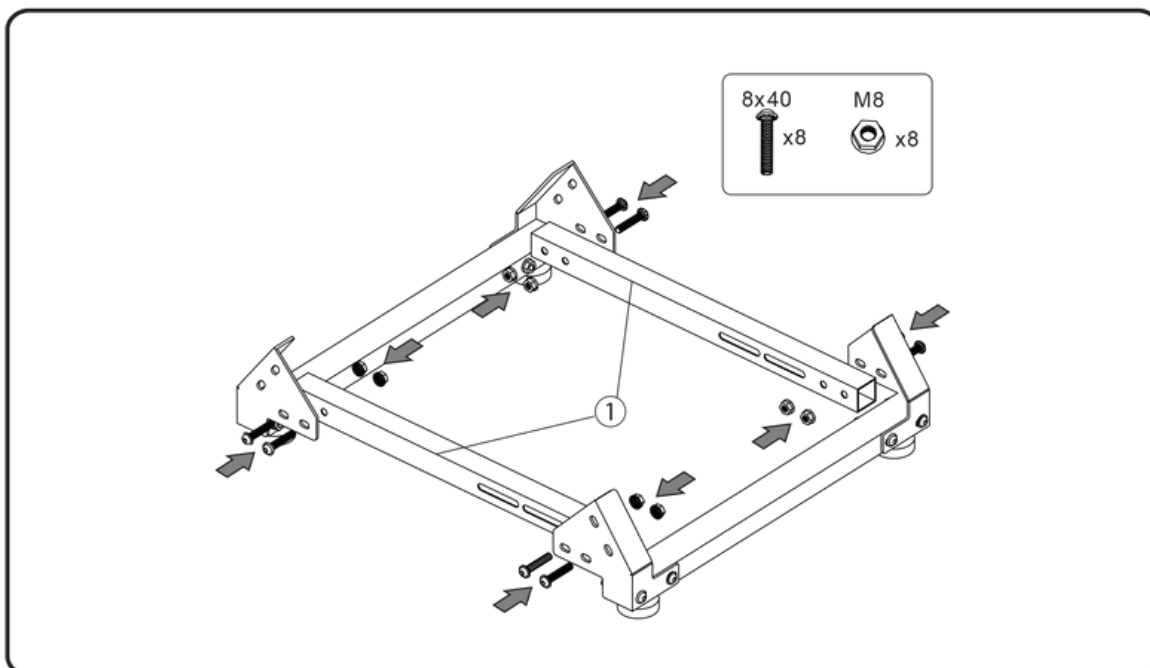
If you are missing any parts, please contact our customer support team who can assist.

# ASSEMBLY INSTRUCTIONS

1



Assemble the upright sections by joining Parts 8 and 2 as shown. Once complete, attach both upright assemblies to the lower frame.

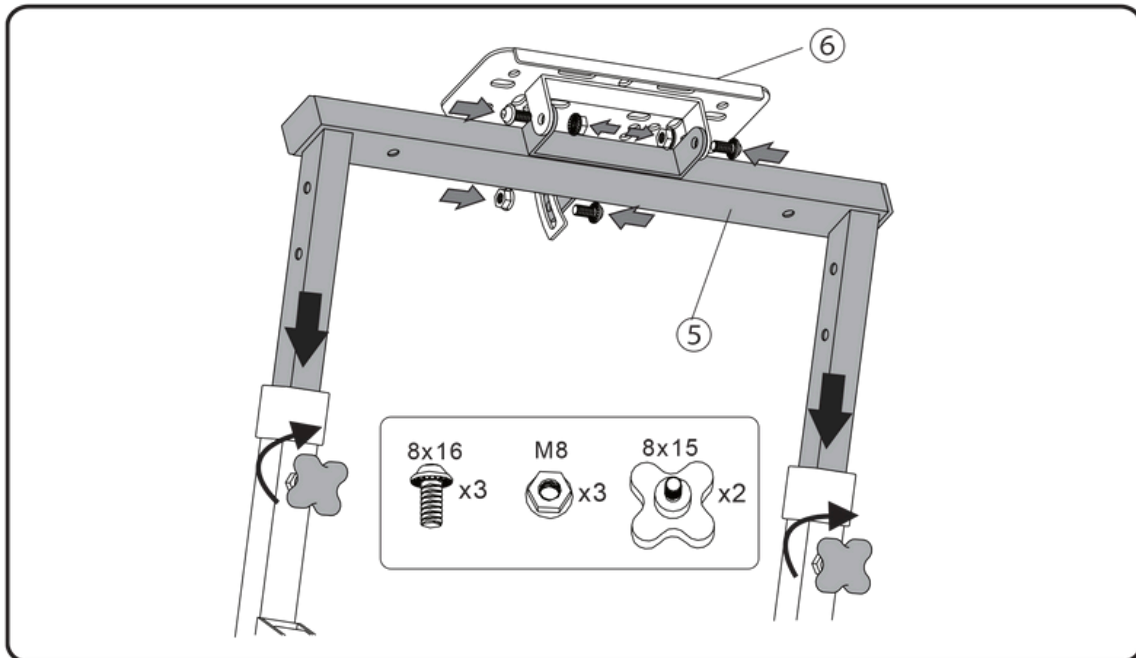


Join the two lower sections using Part 1, as shown. Secure them with the long bolts and nuts to complete your lower frame.

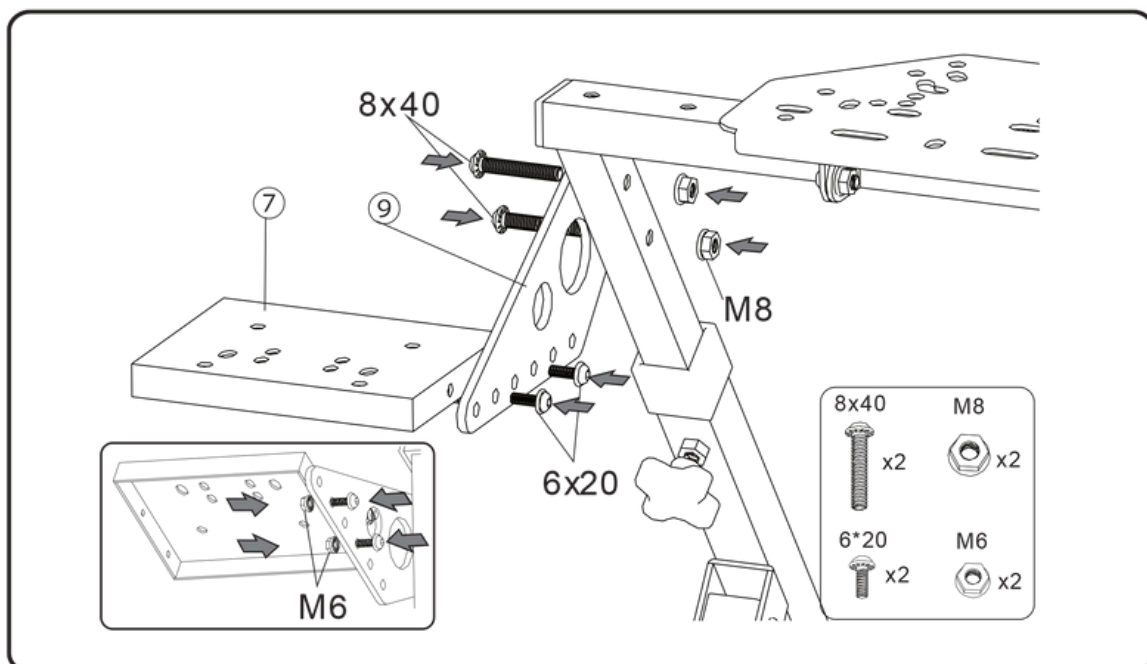


# ASSEMBLY INSTRUCTIONS

3



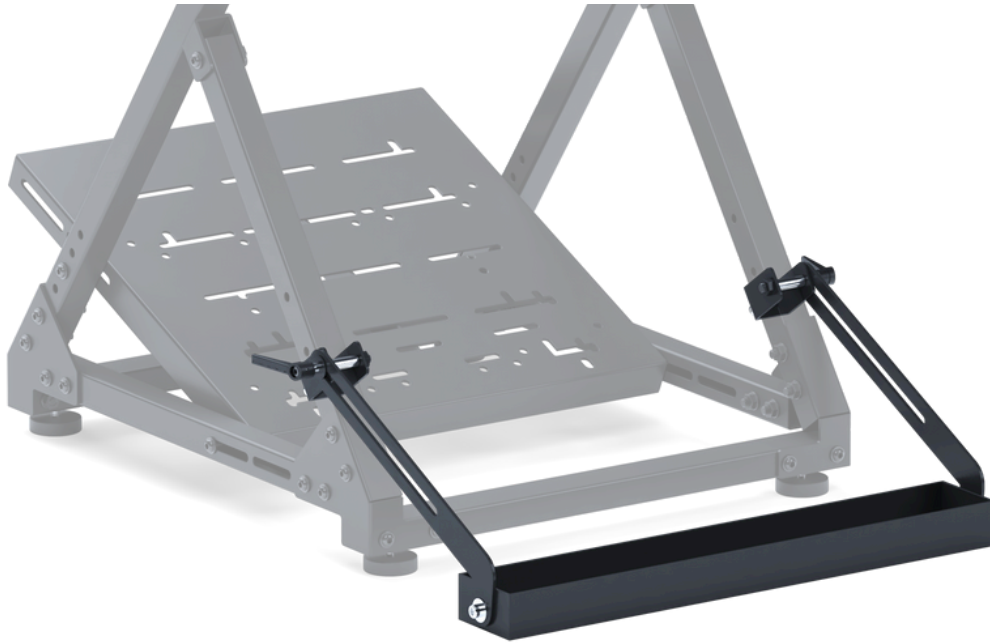
Slide the upper section (Part 5) onto the uprights. Then attach the wheel deck (Part 6) to the upper section using the provided bolts. Secure all components in place with the hand bolts.



Attach the gear shifter mount (Part 9) to the upright section using bolts and nuts. Then secure the shifter plate (Part 7) in your preferred position.

# ASSEMBLY INSTRUCTIONS

4



Hook the U-brackets onto the frame and tighten the Bristol levers to lock the chair link arms in place. Then align the wheel tray with the arms and secure it using the specified nuts and bolts.



## JARDIER'S SETUP TIPS

### Dial in Your Pedal Plate Angle

The DD-X offers pedal plate adjustability. Tilt it slightly upward for a more realistic driving posture. This helps with muscle memory and pedal control in longer stints.

### Consider Floor Grip

Pairing the stand with a Simulator Floor Mat reduces slippage on tile or wood flooring and dampens vibrations, giving you a more solid feel when racing.

### Cable Management

Use Velcro straps to manage cables along the frame. It prevents tugs and accidental disconnections mid-race, especially if you move your setup occasionally.

### Don't Ignore Adjustability

Take the time to test different wheel heights and pedal distances over multiple sessions. Small tweaks can make a big difference in comfort and lap times.

# Unlock the full potential of your

# DD-X

WHEEL STAND



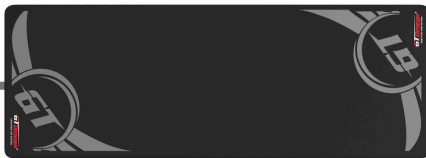
## Keyboard and Mouse Tray

Stay in control without ever having to leave your seat. The non-slip rubber coating ensures that your keyboard and mouse will stay firmly planted while you play.



## Rear Seat Frame

Turn your wheel stand into a full racing cockpit with this budget-friendly upgrade to improve performance and immersion. Compatible with all GT Omega Racing Seats



## Simulator Floor Mat

The Simulator Floor Mat is designed to provide a slip and vibration free surface for your cockpit. The perfect finishing touch for any racing set up.



## Locking Caster Wheels

Make your setup mobile with lockable caster wheels. Easily move your rig when needed and lock it in place for stable racing.

## Bundle and Save!

Save **up to 17%** on your sim racing accessories when you build your own accessory bundles.

[View Sim Accessory Bundles](#)